



LSA - LIFE SAVING APPLIANCES



LIFEBOATS

DAVITS

RESCUE BOATS

LAUNCHING AND RELEASING SYSTEMS

LOAD TESTING

FIRE FIGHTING EQUIPMENT



ABOUT US

Metalock stands for a highly successful technology intended for the repair of cracked or broken cast iron or steel. This cold process originated in the oil fields of Texas in the 1930's; developed to eliminate the dangers of open flame welding in inflammable conditions.

The process has many ancillary advantages, such as the absence of heat, meaning the elimination of distortion, reduction in post repair machining and maintenance of pressure tightness.

Metalock International Association was created in 1953. The members funded associated companies throughout the world with most, not all, using the Metalock name. Today these and further independent companies are members of the Metalock International Association.

Metalock activities in Brazil started in São Paulo, in June of 1957, under the name Unilock. The basic activity was performing repairs to cold cast iron components, mainly for industrial and marine equipment, such as diesel engines, compressors, pumps and presses. At that time, most industrial machinery was made in cast iron and the repair market expanded because there was a shortage of spare parts, as a consequence of World War II. When steel partially substituted cast iron in machinery, Unilock, which was by then well established in the industrial market, diversified its activities. During those initial years, there was considerable demand for marine equipment repairs in Brazil. In January of 1961, the company took over Oficina Duncan, a marine engineering service company in Santos, and after this acquisition the new company adopted the name Metalock Brasil Ltda., adding marine engineering services to its activities.

Metalock Brasil expanded its engineering services in the industrial, marine and offshore markets in Brazil considerably, building itself a reputation for reliable services conducted in-house – cold stitching (Metalock®), mechanical, machining, in-situ machining, welding, plate work, boiler work, electrical, electronics, pneumatics, hydraulics, propulsion, refrigeration, electroplating and safety inspections.

Metalock Brasil is authorized service representative for more than 60 manufacturers of marine equipment and its technicians regularly attend training courses at these manufacturers abroad, keeping abreast of global technological developments and methods. In addition it has close working arrangements with other marine equipment manufacturers. Its repair teams are accustomed to working abroad, on board vessels during voyages and are readily deployed to anywhere in the world.

Metalock Brasil has workshops in Santos, São Paulo and Rio de Janeiro. It attends at all major ports in Brazil and South America, often using a qualified network of subcontractors, under its supervision, enabling it to offer local service, thus minimizing travel time and costs. It also provides riding squads for all voyage repairs, along the Brazilian coast as well as abroad. Through MIA, ISES and fellow representatives of manufacturers, it offers a global service network.

Metalock Brasil is ISO 9001:2015 certified by DNV-GL.





LIFEBOAT, DAVITS, RESCUE BOATS, LAUNCHING AND RELEASE SYSTEMS

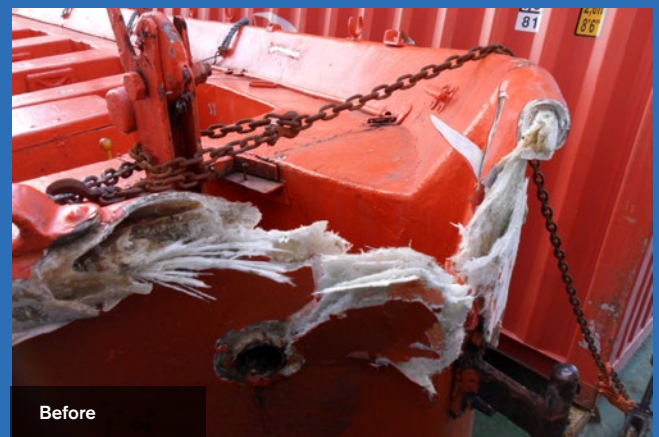


- Inspection, Services and Maintenance
- GRP (Glass Reinforced Plastic) Repairs
- Structural Repairs
 - Engine and propulsion systems maintenance, repairs and commissioning
 - Inspection of accommodation ladders and gangways
 - Replacement of lifeboat release and retrieval systems

In compliance with IMO SOLAS MSC
Circ. 1206, 1277, 1331 and 1392

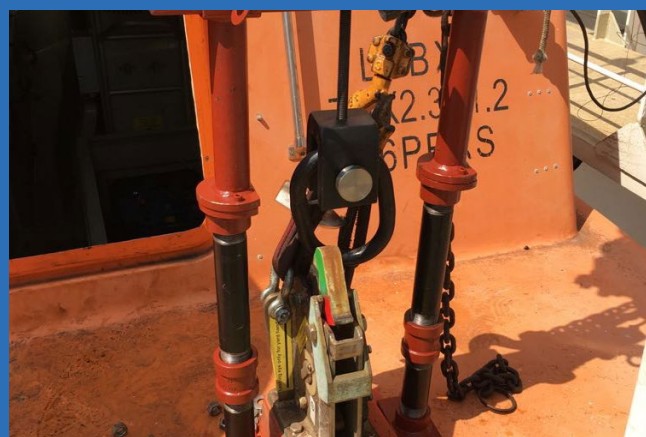
Classification Societies:

- ABS
- BV
- DNV GL
- LR
- NK
- RINA





- Lifeboats
- Davits
- Accommodation Ladders
- Gangways
- Cargo Gears
- Cranes
- Load testing up to 300 mT (using water bags, load cells and flow meters)
- On-load hook tester up to 10 Tons



FIRE FIGHTING EQUIPMENT



Fire Fighting & Life Saving Appliances

- Breathing Air Apparatus
- Escape Set
- Medical Oxygen Resuscitator
- Fire Extinguishers
- Fire Hose & Hydrants
- Immersion Suit
- Lifejackets
- Anti-Exposure Suit

Fixed Systems

- CO2 High Pressure
- Dry Powder System
- Foam System
- Galley System
- LAFF System
- Deep Fat Galley System
- BA Compressor
- Medical Oxygen System
- Chem/Inert Gas System (Novec, FM200, Inergen)



In compliance with MSC
Circ's 1318, 1432, A.951

DNV-GL Certified

LIFE SAVING APPLIANCES

- ALAMARIN JET
- D-I DAVIT INTERNATIONAL-HISCHE
- FASSMER-MARLAND
- FASSMER SERVICE
- GLOBAL DAVIT
- HATECKE
- HOEI SENPAKU
- HYUNDAI LIFEBOATS & BADA
- IKNOW ex TSUJI MARINE SERVICES
- IMC - JMU EX IHI MARINE
- JIANGSU JIAOYAN MARINE
JIANGYIN XINJIANG F.R.P
- MANSEI INC.
INCLUDING MIURA MACHINE VIDER
- NISHI-F
- NK CO. LTD. THE SAFETY CO.
- ORIENTAL PRECISION
- QINGDAO BEIHAI
- SEKIGAHARA SEISAKUSHO
- SHIGI
- STEYR MOTORS
- SURVIVAL SYSTEMS INTERNATIONAL
- VIKING - NADIRO
- ZHENJIANG AUX MACHINERY

ELECTRO-MECHANICAL

- DMW CORPORATION
- EMOD MOTOREN
- EVOQUA
- EPOCAST ITW ENGINEERED POLYMERS
- FUKUI SEISAKUSHO
- HYUNDAI GLOBAL SERVICE
ENGINE AND MACHINERY (HIMSEN, MAN B&W, WinGD)
ELECTRO ELECTRIC SYSTEMS
- IKNOW ex TSUJI MARINE SERVICES
- INTELLIGENT ENGINEERING
SPS SANDWICH PLATE SYSTEM
- J-ENG UE ENGINE
- KANGRIM
- KAWASAKI HEAVY INDUSTRIES
- KAWASAKI PRECISION MACHINERY
- MARELLI MOTORI
- MET TURBO (MITSUBISHI)
- MIRAE INDUSTRIES
- NAMURA SHIPBUILDING CO.
- OPTIMARIN
- PANASIA
- REINTJES
- SHANGHAI NSE
- SHINKO
- SKF MARINE SIMPLEX · TURBULO
- S&SYS PURIMAR
- STEYR MOTORS
- TAIYO ELECTRIC
- TEIKOKU
- WEG
- YANMAR - LARGE MARINE ENGINE

ELECTRONICS

- ALPHATRON MARINE
- AMI
- BEMAC UZUSHIO ELECTRIC
- CONSILIUM (RADAR)
- DECKMA VIA SKF MARINE
- GRAVINER
- HEADWAY
- HIGHLANDER
- ICS ELECTRONICS
- MACGREGOR GERMANY
INTERSCHALT
- JOTRON
- JRC
- JRCS
- KANGRIM
- KANNAD MARINE
- KELVIN HUGHES
- KTE
- NABTESCO
- NAKAKITA SEIKAKUSHO
- NK CO. LTD.
- OROLIA
KANNAD · McMURDO · NETWAVE · RUTTER
- RIKEN KEIKI
- SAAB TRANSPONDERTECH
- SAIERNICO ELECTRIC
- S&SYS SAMSUNG HEAVY INDUSTRIES
POWER & CONTROL SYSTEMS DIVISION
- TAIYO ELECTRIC
- WÄRTSILÄ SAM ELECTRONICS · TRANSAS
- YOKOGAWA



www.metalock.com.br

WORKSHOPS

Santos

Rua Visconde do Rio Branco, 20/26
11013-030 · Santos
SP · Brasil
Tel.: +55 (13) 3226-4686
santos@metalock.com.br

Rio de Janeiro

Rua da Gamboa, 281
20220-324 · Rio de Janeiro
RJ · Brasil
Tel.: +55 (21) 2516-5561
rio@metalock.com.br

São Paulo

Avenida Bom Jardim, 330
03035-000 · São Paulo
SP · Brasil
Tel.: +55 (11) 2292-5422
sao.paulo@metalock.com.br

AGENTS

Greece & Cyprus F-WayServ

Contact: George Karavariotis
Tel.: +30 210 894 7664
Cel.: +30 697 301 6585
info@fwayserv.com

Italy

Contact: Gianfranco Scarsi
Tel.: +39 331 677 4364
gf.scarsi@gmail.com

Turkey

Atlantis Marine Service Ltd.
Contact: Caner Ararat
Tel.: +90 216 290 12 06
caner@atlantismarine.com.tr

USA

Vogler Marine Agencies
Contact: Don Vogler
Tel.: +1 908 581 0900
shiprepair@vogler.net

India

Suprimar Maritime Services
Contact: Probal Mitter
Tel.: +91 22 3192 2106
Cel.: +91 98217 35745
suprimar@suprimar.net

Norway

Storm & Bull Shipping AS
Contact: Sigurd A. Wold
Tel.: +47 52 70 12 55
haugesund@storm-bull.no

UK

ISES Ltd.
Contact: Pepe Bris
Tel.: +34 627 919 9990
secretariat@isesassociation.com